

# Plate Heat Exchanger Indirect Fired Water Heater

### Uses Low Temperature Boiler Water To Heat Domestic Water

## Features

### ■ Reliable

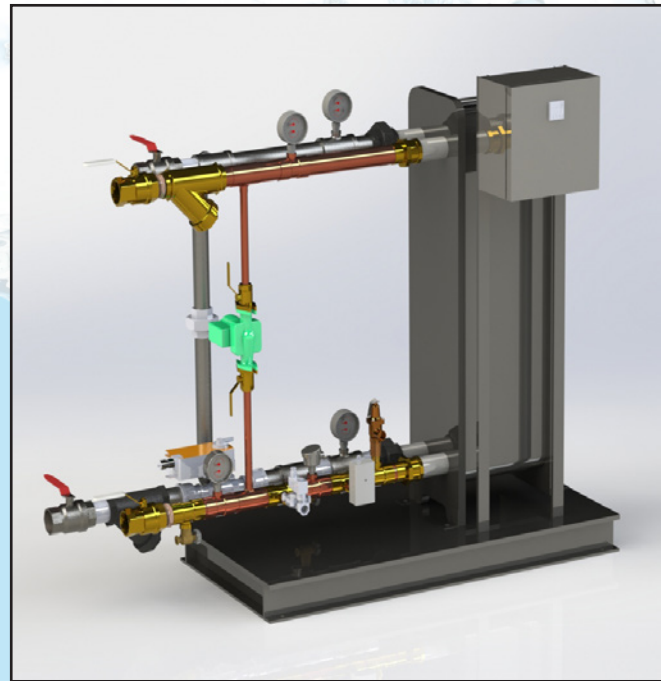
- ✓ Only non-ferrous components on domestic water side
- ✓ Replaceable brazed plate or plate and frame heat exchanger
- ✓ Heavy duty construction withstands demanding commercial/industrial use

### ■ Packaged System

- ✓ Factory selected and sized boiler water control valve simplifies installation and ensures reliable operation

### ■ Versatile

- ✓ Compact design requires minimal floor space
- ✓ Designed to fit through a standard door opening



## Applications

- |                    |                         |
|--------------------|-------------------------|
| ■ Schools          | ■ Industrial Facilities |
| ■ Office Buildings | ■ Nursing Homes         |
| ■ Sports Venues    | ■ Hospitals             |
| ■ Hotels           | ■ Heat Recovery Systems |

## Model BWXP

### Instantaneous Type

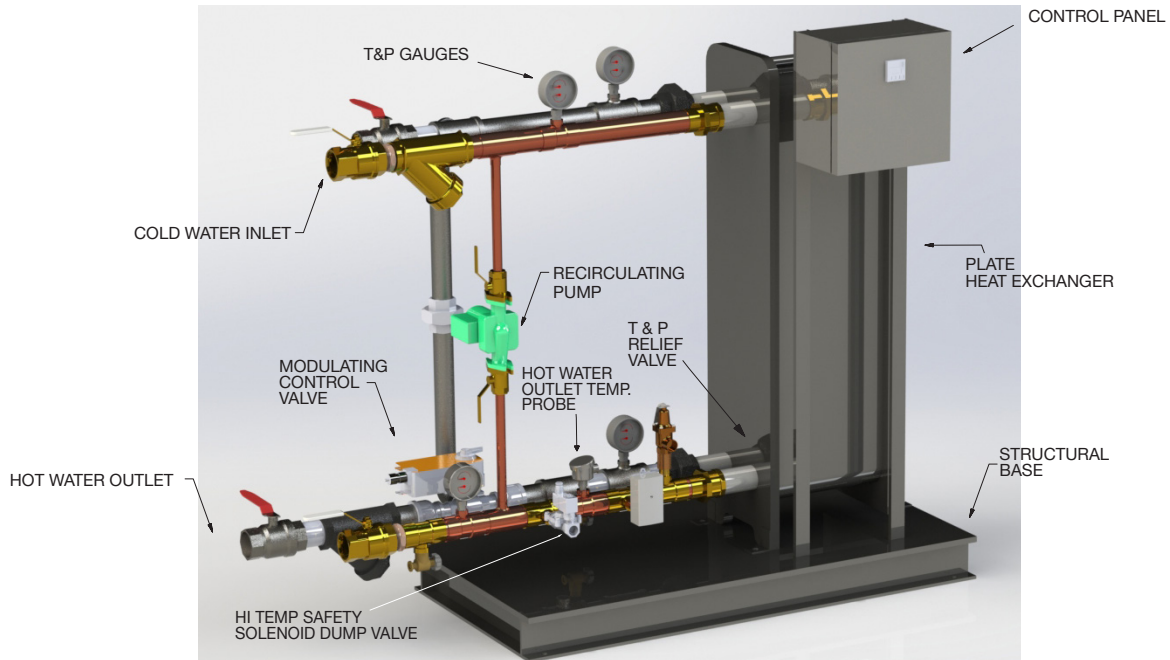
The Model BWXP is equipped with all operating controls and ready for immediate installation

## A Heavy Duty Indirect Fired Water Heater

The Model BWXP is a fully packaged indirect fired water heater utilizing boiler water from a condensing boiler as the energy source for heating potable water. By utilizing plate type heat exchangers the system can provide efficient heat transfer at temperatures below traditional U-tube bundles. The entire package is designed to be a reliable and long lasting source of hot water. Each component is carefully selected to ensure high performance in even the most

demanding applications. All components on the potable water side will be constructed with non-ferrous material. Whether you are heating potable water in a commercial building or process water for an industrial application, you can select a Hubbell BWXP to do the job. When you specify and install a Hubbell water heater, you will be provided with a quality product that is a long lasting and trouble free source of hot water.

# BWXP General Arrangement



**Note:** specific dimensions provided upon formal submittal.

## Specifications:

<b>Domestic Water Pressure Drop:</b>	8 PSIG at maximum flowrate
<b>Electrical Requirements:</b>	120/1/60 Hz 5 Amp
<b>Maximum Boiler Water Temperature and Pressure:</b>	220° F/150 PSIG
<b>Maximum Domestic Water Temperature and Pressure:</b>	180° F/150 PSIG
<b>Temperature Control Range:</b>	34 -180° F

## Standard Equipment:

### Heat Exchanger

Plate heat exchangers are extremely efficient, allowing for close or cross temperature approaches between the boiler water and heated water. Hubbell offers single wall or double wall brazed plate or plate and frame type heat exchangers.

### Control Valve

Hubbell water heaters are factory furnished with a boiler water control system to regulate the flow of boiler water through the heat exchanger.

- Modulating 3-Way Diverting Valve
- Modulating 2-Way

### High Limit Safety System

Fail safe control valve for over temperature protection valve opens and sends over temp water to drain until over temp condition is remedied

### Temperature and Pressure Gauges

Provided on boiler and domestic water inlet and outlet connections.

### Pressure and Temperature Relief Valve

All Hubbell packaged systems are provided with a T&P Relief Valve sized for the maximum output of the heat exchanger.

### Intra-System Domestic Water Circulator

Domestic water fractional horsepower pump circulates water through the heat exchanger. Reducing the potential for scale build-up and maximizing the heat transfer efficiency of the system.

### Structural Steel Base

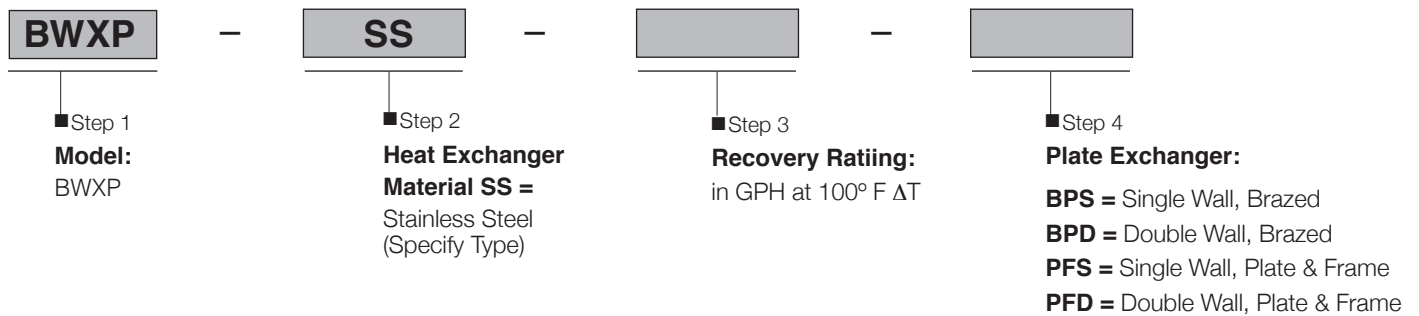
Designed to fit through a doorway. The structural steel base affords easy rigging and protects components from damage.

## Optional Features:

- 1. Remote start/stop
- 2. Dry contacts for over temperature indication
- 3. Audible alarm system
- 4. Double safety solenoid
- 5. Double wall heat exchanger
- 6. Alternate water temperature range
- 7. Pump Enable (HVAC only)
- 8. 300 psi working pressure
- 9. RS-485 modbus communication port for remote operation of the temperature controller
- 10. 4-20mA signal for remote temperature indication
- 11. NEMA 4 construction for wet locations

Please note: optional equipment may impact overall dimensions and weight. Please request submittal drawing from factory.

## BWXP Model Number Designation



### Note:

Any and all optional equipment for a water heater must be called out in the written specifications. A model number in and of itself does not reflect any optional equipment selected.